

Report of the profile of COVID-19 cases in healthcare workers in Ireland

Report prepared by HPSC on 15/06/2020

Note: Data are provisional

Summary

This report includes data as of 15th June 2020 at 9:15 am for events created on CIDR up to midnight Saturday 13th June 2020.

Characteristic of HCW COVID-19 cases	Number	%
Total number of COVID-19 cases	25719	-
Total number of HCW cases	8180	31.8
Number of new cases reported between 7 - 13 June	16	-
Median age (IQR)	41 (31-50) years	-
Total number hospitalised	309	3.7
The median age (IQR) of hospital inpatient	47 (34-53) years	
Total number admitted to ICU	44	14.2*
The median age (IQR) of HCW in ICU	51 (44-60) years	-
Total number of deaths	7**	0.09
The median age (range) for deaths	51 (30-68) years	-

*This relates to hospitalised cases and it is 0.5% of all HCW cases.

**Six confirmed and 1 probable COVID-19 case.

There was a total of 25719 COVID-19 cases reported as of 13/06/2020 12.00 midnight, 8180 (31.8%) were healthcare workers (HCWs).

The median age of COVID-19 case HCWs is 41 years (range 17-78 years). The proportion of females is disproportionately high (74%) among HCW COVID-19 cases compared to non-HCW COVID-19 cases (49.4%), most likely due to some HCW specialities e.g. nursing being female dominated. The majority (58.5%) of notified HCWs were from the HSE East. CIDR (Computerised Infectious Diseases Reporting) is a dynamic information system and data are continuously validated and updated.

Table 1. Number and proportion of HCW COVID-19 cases by epidemiological week

Epi Week (Calendar Date)	Number of HCWs	Total number of all cases*	Proportion of HCWs (%)
10 (1 – 7, March)	3	16	18.8
11 (8 – 14, March)	23	128	18.0
12 (15 – 21, March)	204	684	29.8
13 (22 – 28, March)	437	1633	26.8
14 (29 March - 4 April)	931	2435	38.2
15 (5 – 11, April)	1620	4584	35.3
16 (12 – 18, April)	1603	5667	28.3
17 (19 - 25, April)	1234	3901	31.6
18 (26 April – 2 May)	808	2591	31.2
19 (3 –9 May)	491	1503	32.7
20 (10-16 May)	486	1196	40.6
21 (17-23 May)	146	589	24.8
22 (24-30 May)	107	427	25.1
23 (31 May - 6 June)	71	248	28.6
24 (7 – 13 June)	16	117	13.7
Total	8180	25719	31.8

*including HCWs

Figure 1 Proportion of HCW and non-HCW COVID-19 cases by week in which case was notified (n= 25719)

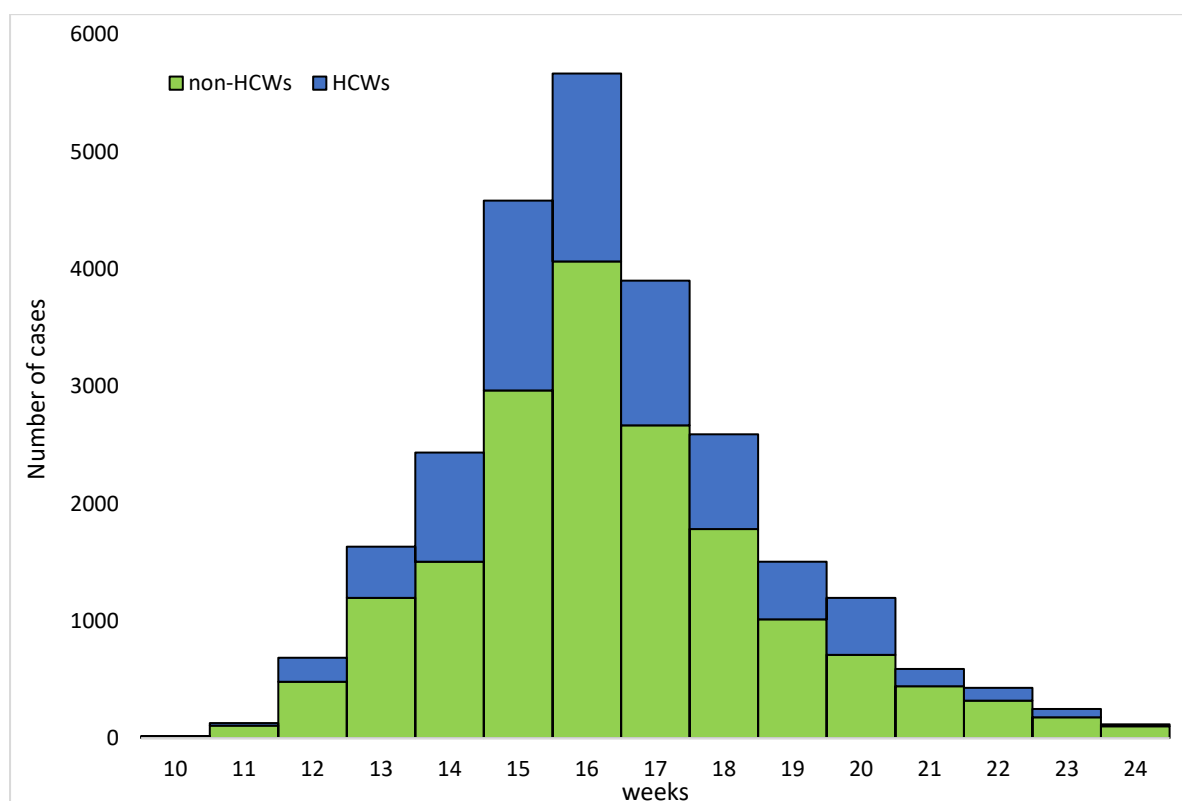
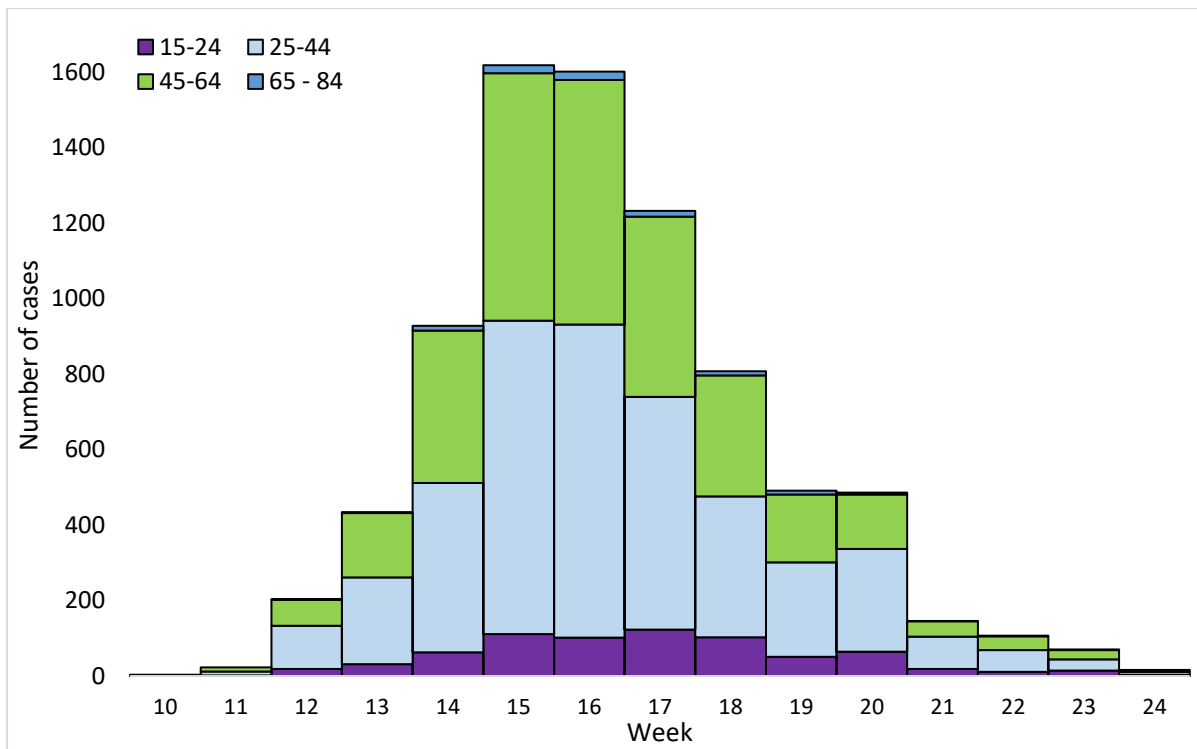
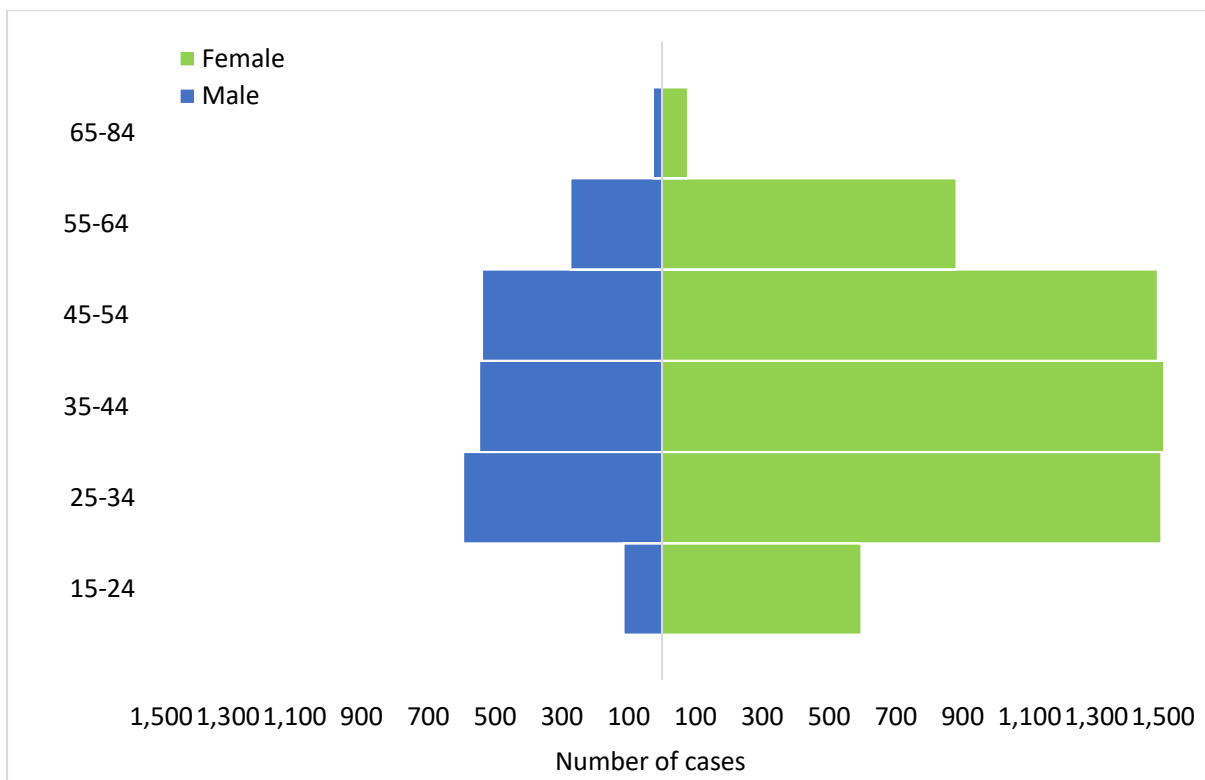


Figure 2. Distribution of HCW COVID-19 cases by week in which case was notified * and age group (n=8170)



* Age was not available for 10 cases.

Figure 3. Distribution of HCW COVID-19 cases by age and sex (n=8153) *



* Age and sex were not available for 27 cases.

Table 2. Number and proportion of HCW COVID-19 cases by HSE area

HSE area	Number of HCWs cases	Proportion of all HCW cases	Number of new HCW cases since last week
HSE E	4785	58.5%	10
HSE M	438	5.4%	-
HSE MW	364	4.4%	-
HSE NE	1121	13.7%	<5
HSE NW	304	3.7%	-
HSE SE	332	4.1%	<5
HSE S	421	5.1%	-
HSE W	415	5.1%	<5
Total	8180	100.0%	16

CIDR is a dynamic information system and is continuously updated.

Table 3. Number and proportion of HCW COVID-19 cases by CHO area

CHO area	Number of HCWs cases	Proportion of all HCW cases	Number of new HCW cases since last week
CHO1	808	9.9%	-
CHO2	415	5.1%	<5
CHO3	364	4.4%	<5
CHO4	421	5.1%	-
CHO5	332	4.1%	-
CHO6	890	10.9%	-
CHO7	1749	21.4%	<5
CHO8	1055	12.9%	<5
CHO9	2146	26.3%	8
Total	8180	100.0%	16

CIDR is a dynamic information system and is continuously updated.

Table 4. Number and proportion of HCW COVID-19 cases by role

HCW Role	Number of HCWs cases	Proportion of all HCW cases	Number of new HCW cases since last week
Nurse	2680	32.8%	<5
Healthcare assistant	2124	26.0%	9
Doctor	502	6.1%	<5
Porter	90	1.1%	-
Other HCW	1923	23.5%	<5
Unknown	861	10.5%	<5
Total	8180	100.0%	16

CIDR is a dynamic system and is continuously updated.

Table 5. Number and proportion of HCW COVID-19 cases linked to an outbreak by outbreak location

Outbreak location	Number of HCWs cases	Proportion of all cases	Number of new cases since last week
Nursing home	1755	21.5%	<5
Hospital	730	8.9%	<5
Residential institution	350	4.3%	-
Comm. Hosp/Long-stay unit	218	2.7%	-
Private house	92	1.1%	<5
Community outbreak	14	0.2%	-
Extended family	19	0.2%	-
Other	26	0.3%	-
Workplace	32	0.4%	-
Travel related	26	0.3%	-
Public house	4	0.0%	-
Not linked to an outbreak	4914	60.0%	10
Total	8180	100.0%	16

CIDR is a dynamic information system and is continuously updated .

Table 6. Number and proportion of HCW COVID-19 cases with underlying medical conditions

Underlying clinical conditions	Number	Percentage
Yes	2843	34.7%
No	4551	55.6%
Unknown	786	9.7%
Total	8180	100.0%

Table7. Number of confirmed HCW COVID-19 cases by WHO transmission classification

Transmission classification*	Number	Percentage
Community transmission - including possible community transmission	1726	21.1%
Local transmission	6310	77.1%
Travel related	144	1.8%
Total	8180	100%

*WHO definition of transmission classification is specified below:

- Community transmission is evidenced by the inability to relate confirmed cases through chains of transmission for a large number of cases, or by increasing positive tests through routine screening of sentinel samples.
- Local transmission indicates locations where the source of infection is within the reporting location.
- Imported cases only indicates locations where all cases have been acquired outside the location of reporting.

‘Most likely source of transmission’ is a composite variable created by combining several data fields on CIDR. The rate of HCWs with ‘Under investigation’ transmission source category (n=1538, 18.6%) is expected to decrease due to continuous improvement of the transmission source variable algorithm and the completeness of surveillance data.

Table8. Most likely source of transmission of COVID-19 in HCWs

Likely source of transmission	Number	Percentage
Healthcare setting acquired: staff*	5444	66.7%
Close contact with a known confirmed case	864	10.5%
Travel related	144	1.7%
Community transmission	188	2.3%
Healthcare setting acquired: patient	2	0.1%
Under investigation	1538	18.6%
Total	8180	100.0%

*Includes HCWs with Most likely source of transmission notified as Healthcare setting acquired: staff AND HCWs with Most likely source of transmission field not completed on CIDR who had close contact with a COVID-19 case in Healthcare or Workplace setting AND HCWs with Most likely source of transmission field not completed on CIDR who are linked to an outbreak in a Comm. Hosp/Long-stay unit / Hospital / Nursing home.